

316SS HARDWARE

PARTIAL THREAD (PT)



FULL THREAD (FT)



COMMON SIZES LISTED. OTHER SIZES AVAILABLE

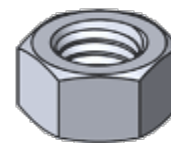
PART NUMBER	SIZE	THREAD	QTY	PART NUMBER	SIZE	THREAD	QTY
316SSHHCS1412	1/4"-20 X 1/2"	FT	100	316SSTAP382	3/8"-16 X 2"	FT	50
316SSHHCS1434	1/4"-20 X 3/4"	FT	100	316SSHHCS38212	3/8"-16 X 2 1/2"	PT	50
316SSHHCS141	1/4"-20 X 1"	FT	100	316SSTAP38212	3/8"-16 X 2 1/2"	FT	50
316SSHHCS14114	1/4"-20 X 1 1/4"	PT	100	316SSHHCS383	3/8"-16 X 3"	PT	50
316SSTAP14114	1/4"-20 X 1 1/4"	FT	100	316SSTAP383	3/8"-16 X 3"	FT	50
316SSHHCS14112	1/4"-20 X 1 1/2"	PT	100	316SSHHCS38312	3/8"-16 X 3 1/2"	PT	25
316SSTAP14112	1/4"-20 X 1 1/2"	FT	100	316SSTAP38312	3/8"-16 X 3 1/2"	FT	25
316SSHHCS142	1/4"-20 X 2"	PT	100	316SSHHCS384	3/8"-16 X 4"	PT	25
316SSTAP142	1/4"-20 X 2"	FT	100	316SSTAP384	3/8"-16 X 4"	FT	25
316SSHHCS14212	1/4"-20 X 2 1/2"	PT	100	316SSHHCS1234	1/2"-13 X 3/4"	FT	50
316SSTAP14212	1/4"-20 X 2 1/2"	FT	100	316SSHHCS121	1/2"-13 X 1"	FT	50
316SSHHCS143	1/4"-20 X 3"	PT	100	316SSHHCS12114	1/2"-13 X 1 1/4"	FT	50
316SSTAP143	1/4"-20 X 3"	FT	100	316SSHHCS12112	1/2"-13 X 1 1/2"	FT	50
316SSHHCS51612	5/16"-18 X 1/2"	FT	100	316SSHHCS122	1/2"-13 X 2"	PT	25
316SSHHCS51634	5/16"-18 X 3/4"	FT	100	316SSTAP122	1/2"-13 X 2"	FT	25
316SSHHCS5161	5/16"-18 X 1"	FT	100	316SSHHCS12212	1/2"-13 X 2 1/2"	PT	25
316SSHHCS516114	5/16"-18 X 1 1/4"	FT	100	316SSTAP12212	1/2"-13 X 2 1/2"	FT	25
316SSHHCS516112	5/16"-18 X 1 1/2"	PT	100	316SSHHCS123	1/2"-13 X 3"	PT	25
316SSTAP516112	5/16"-18 X 1 1/2"	FT	100	316SSTAP123	1/2"-13 X 3"	FT	25
316SSHHCS5162	5/16"-18 X 2"	PT	100	316SSHHCS12312	1/2"-13 X 3 1/2"	PT	25
316SSTAP5162	5/16"-18 X 2"	FT	100	316SSTAP12312	1/2"-13 X 3 1/2"	FT	25
316SSHHCS516212	5/16"-18 X 2 1/2"	PT	100	316SSHHCS124	1/2"-13 X 4"	PT	25
316SSTAP516212	5/16"-18 X 2 1/2"	FT	100	316SSTAP124	1/2"-13 X 4"	FT	25
316SSHHCS5163	5/16"-18 X 3"	PT	100	316SSHHCS581	5/8"-11 X 1"	FT	50
316SSTAP5163	5/16"-18 X 3"	FT	100	316SSHHCS58114	5/8"-11 X 1 1/4"	FT	50
316SSHHCS3812	3/8"-16 X 1/2"	FT	100	316SSHHCS58112	5/8"-11 X 1 1/2"	FT	50
316SSHHCS3834	3/8"-16 X 3/4"	FT	100	316SSHHCS582	5/8"-11 X 2"	FT	25
316SSHHCS381	3/8"-16 X 1"	FT	100	316SSHHCS58212	5/8"-11 X 2 1/2"	PT	25
316SSHHCS38114	3/8"-16 X 1 1/4"	FT	100	316SSHHCS583	5/8"-11 X 3"	PT	25
316SSHHCS38112	3/8"-16 X 1 1/2"	PT	100	316SSHHCS58312	5/8"-11 X 3 1/2"	PT	25
316SSTAP38112	3/8"-16 X 1 1/2"	FT	100	316SSHHCS584	5/8"-11 X 4"	PT	25
316SSHHCS382	3/8"-16 X 2"	PT	100				

SEE NEXT PAGE FOR NUTS AND WASHERS

316SS HARDWARE

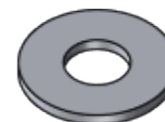
ASTM F467 FINISHED HEX NUTS

PART NUMBER	SIZE		QTY
316SSHN632	#6-32	7/64" THICK	100
316SSHN832	#8-32	1/8" THICK	100
316SSHN1024	#10-24	1/8" THICK	100
316SSHN1032	#10-32	1/8" THICK	100
316SSHN14	1/4"-20	7/32" THICK	100
316SSHN516	5/16"-18	17/64" THICK	100
316SSHN38	3/8"-16	21/64" THICK	100
316SSHN12	1/2"-13	7/16" THICK	100
316SSHN58	5/8"-11	35/64" THICK	50
316SSHN34	3/4"-10	41/64" THICK	50
316SSHN78	7/8"-9	3/4" THICK	25
316SSHN1	1"-8	55/64" THICK	25



ANSI B18.22.1 USS PATTERN FLAT WASHERS

PART NUMBER	BOLT SIZE		QTY
316SSFW6	#6	.375" OD X .031" THICK	100
316SSFW8	#8	.375" OD X .031" THICK	100
316SSFW10	#10	.437" OD X .036" THICK	100
316SSFW14	1/4"	.625" OD X .05" THICK	100
316SSFW516	5/16"	.75" OD X .05" THICK	100
316SSFW38	3/8"	.875" OD X .05" THICK	100
316SSFW12	1/2"	1.25" OD X .062" THICK	100
316SSFW58	5/8"	1.50" OD X .078" THICK	100
316SSFW34	3/4"	1.875" OD X .109" THICK	50
316SSFW78	7/8"	2.00" OD X .109" THICK	50
316SSFW1	1"	2.00" OD X .125" THICK	50



ANSI B18.21.1 MEDIUM SPLIT LOCK WASHERS

PART NUMBER	BOLT SIZE		QTY
316SSLW6	#6	.031" THICK	100
316SSLW8	#8	.040" THICK	100
316SSLW10	#10	.056" THICK	100
316SSLW14	1/4"	.062" THICK	100
316SSLW516	5/16"	.078" THICK	100
316SSLW38	3/8"	.094" THICK	100
316SSLW12	1/2"	.125" THICK	100
316SSLW58	5/8"	.156" THICK	100
316SSLW34	3/4"	.188" THICK	100
316SSLW78	7/8"	.219" THICK	50
316SSLW1	1"	.250" THICK	50

