

**SILICON BRONZE  
HARDWARE**



ALLOY 651 , ANSI B18.2.1 HEX BOLTS FULL THREAD (FT)  
COMMON SIZES LISTED. OTHER SIZES AVAILABLE

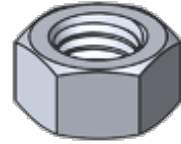
PART NUMBER	SIZE	THREAD	QTY	PART NUMBER	SIZE	THREAD	QTY
SBHHCS1412	1/4"-20 X 1/2"	FT	100	SBHHCS38312	3/8"-16 X 3 1/2"	FT	25
SBHHCS1458	1/4"-20 X 5/8"	FT	100	SBHHCS384	3/8"-16 X 4"	FT	25
SBHHCS1434	1/4"-20 X 3/4"	FT	100	SBHHCS1234	1/2"-13 X 3/4"	FT	50
SBHHCS141	1/4"-20 X 1"	FT	100	SBHHCS121	1/2"-13 X 1"	FT	50
SBHHCS14114	1/4"-20 X 1 1/4"	FT	100	SBHHCS12114	1/2"-13 X 1 1/4"	FT	50
SBHHCS14112	1/4"-20 X 1 1/2"	FT	100	SBHHCS12112	1/2"-13 X 1 1/2"	FT	50
SBHHCS142	1/4"-20 X 2"	FT	100	SBHHCS12134	1/2"-13 X 1 3/4"	FT	25
SBHHCS14212	1/4"-20 X 2 1/2"	FT	100	SBHHCS122	1/2"-13 X 2"	FT	25
SBHHCS143	1/4"-20 X 3"	FT	100	SBHHCS12212	1/2"-13 X 2 1/2"	FT	25
SBHHCS51612	5/16"-18 X 1/2"	FT	100	SBHHCS123	1/2"-13 X 3"	FT	25
SBHHCS51634	5/16"-18 X 3/4"	FT	100	SBHHCS12312	1/2"-13 X 3 1/2"	FT	25
SBHHCS5161	5/16"-18 X 1"	FT	100	SBHHCS124	1/2"-13 X 4"	FT	25
SBHHCS516114	5/16"-18 X 1 1/4"	FT	100	SBHHCS581	5/8"-11 X 1"	FT	50
SBHHCS516112	5/16"-18 X 1 1/2"	FT	100	SBHHCS58114	5/8"-11 X 1 1/4"	FT	50
SBHHCS516134	5/16"-18 X 1 3/4"	FT	100	SBHHCS58112	5/8"-11 X 1 1/2"	FT	50
SBHHCS5162	5/16"-18 X 2"	FT	100	SBHHCS582	5/8"-11 X 2"	FT	25
SBHHCS516212	5/16"-18 X 2 1/2"	FT	100	SBHHCS58212	5/8"-11 X 2 1/2"	FT	25
SBHHCS5163	5/16"-18 X 3"	FT	100	SBHHCS583	5/8"-11 X 3"	FT	25
SBHHCS3812	3/8"-16 X 1/2"	FT	100	SBHHCS58312	5/8"-11 X 3 1/2"	FT	25
SBHHCS3834	3/8"-16 X 3/4"	FT	100	SBHHCS584	5/8"-11 X 4"	FT	25
SBHHCS381	3/8"-16 X 1"	FT	100				
SBHHCS38114	3/8"-16 X 1 1/4"	FT	100				
SBHHCS38112	3/8"-16 X 1 1/2"	FT	100				
SBHHCS382	3/8"-16 X 2"	FT	50				
SBHHCS38212	3/8"-16 X 2 1/2"	FT	50				
SBHHCS383	3/8"-16 X 3"	FT	50				

SEE NEXT PAGE FOR NUTS AND WASHERS

**SILICON BRONZE  
HARDWARE**

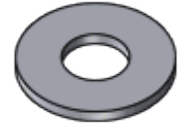
ALLOY 651      ANSI B18.2.2      FINISHED HEX NUTS

PART NUMBER	SIZE		QTY
SBHN632	#6-32	7/64" THICK	100
SBHN832	#8-32	1/8" THICK	100
SBHN1024	#10-24	1/8" THICK	100
SBHN1032	#10-32	1/8" THICK	100
SBHN14	1/4"-20	7/32" THICK	100
SBHN516	5/16"-18	17/64" THICK	100
SBHN38	3/8"-16	21/64" THICK	100
SBHN12	1/2"-13	7/16" THICK	100
SBHN58	5/8"-11	35/64" THICK	50
SBHN34	3/4"-10	41/64" THICK	50



ANSI B18.22.1      USS PATTERN FLAT WASHERS

PART NUMBER	BOLT SIZE		QTY
SBFW6	#6	.375" OD X .031" THICK	100
SBFW8	#8	.375" OD X .031" THICK	100
SBFW10	#10	.437" OD X .036" THICK	100
SBFW14	1/4"	.687" OD X .051" THICK	100
SBFW516	5/16"	.75" OD X .062" THICK	100
SBFW38	3/8"	.875" OD X .062" THICK	100
SBFW12	1/2"	1.25" OD X .091" THICK	100
SBFW58	5/8"	1.50" OD X .102" THICK	100
SBFW34	3/4"	1.75" OD X .114" THICK	50



ANSI B18.21.1      MEDIUM SPLIT LOCK WASHERS

PART NUMBER	BOLT SIZE		QTY
SBLW6	#6	.031" THICK	100
SBLW8	#8	.040" THICK	100
SBLW10	#10	.056" THICK	100
SBLW14	1/4"	.062" THICK	100
SBLW516	5/16"	.078" THICK	100
SBLW38	3/8"	.094" THICK	100
SBLW12	1/2"	.125" THICK	100
SBLW58	5/8"	.156" THICK	100
SBLW34	3/4"	.188" THICK	100

