

## ZINC HARDWARE

PARTIAL THREAD (PT)



FULL THREAD (FT)



ASTM A307 HEX HEAD BOLTS

COMMON SIZES LISTED. OTHER SIZES AVAILABLE

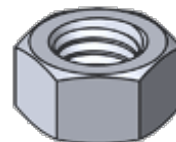
PART NUMBER	SIZE	THREAD	QTY	PART NUMBER	SIZE	THREAD	QTY
HHCS1412	1/4"-20 X 1/2"	FT	100	HHCS1234	1/2"-13 X 3/4"	FT	50
HHCS1434	1/4"-20 X 3/4"	FT	100	HHCS1278	1/2"-13 X 7/8"	FT	50
HHCS141	1/4"-20 X 1"	FT	100	HHCS121	1/2"-13 X 1"	FT	50
HHCS14114	1/4"-20 X 1 1/4"	FT	100	HHCS12114	1/2"-13 X 1 1/4"	FT	50
HHCS14112	1/4"-20 X 1 1/2"	FT	100	HHCS12112	1/2"-13 X 1 1/2"	FT	50
HHCS142	1/4"-20 X 2"	FT	100	HHCS122	1/2"-13 X 2"	FT	25
HHCS14212	1/4"-20 X 2 1/2"	FT	100	HHCS12212	1/2"-13 X 2 1/2"	FT	25
HHCS143	1/4"-20 X 3"	FT	100	HHCS123	1/2"-13 X 3"	FT	25
HHCS51612	5/16"-18 X 1/2"	FT	100	HHCS12312	1/2"-13 X 3 1/2"	FT	25
HHCS51634	5/16"-18 X 3/4"	FT	100	HHCS124	1/2"-13 X 4"	FT	25
HHCS5161	5/16"-18 X 1"	FT	100	HHCS581	5/8"-11 X 1"	FT	50
HHCS516114	5/16"-18 X 1 1/4"	FT	100	HHCS58114	5/8"-11 X 1 1/4"	FT	50
HHCS516112	5/16"-18 X 1 1/2"	FT	100	HHCS58112	5/8"-11 X 1 1/2"	FT	50
HHCS5162	5/16"-18 X 2"	FT	100	HHCS582	5/8"-11 X 2"	FT	25
HHCS516212	5/16"-18 X 2 1/2"	FT	100	HHCS58212	5/8"-11 X 2 1/2"	PT	25
HHCS5163	5/16"-18 X 3"	FT	100	HHCS583	5/8"-11 X 3"	PT	25
HHCS3812	3/8"-16 X 1/2"	FT	100	HHCS58312	5/8"-11 X 3 1/2"	PT	25
HHCS3834	3/8"-16 X 3/4"	FT	100	HHCS584	5/8"-11 X 4"	PT	25
HHCS381	3/8"-16 X 1"	FT	100				
HHCS38114	3/8"-16 X 1 1/4"	FT	100				
HHCS38112	3/8"-16 X 1 1/2"	FT	100				
HHCS382	3/8"-16 X 2"	FT	50				
HHCS38212	3/8"-16 X 2 1/2"	FT	50				
HHCS383	3/8"-16 X 3"	FT	50				
HHCS38312	3/8"-16 X 3 1/2"	FT	25				
HHCS384	3/8"-16 X 4"	FT	25				

SEE NEXT PAGE FOR NUTS AND WASHERS

## ZINC HARDWARE

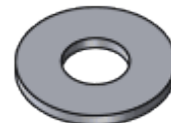
ASTM A563 FINISHED HEX NUTS

PART NUMBER	SIZE		QTY
HN632	#6-32	7/64" THICK	100
HN832	#8-32	1/8" THICK	100
HN1024	#10-24	1/8" THICK	100
HN1032	#10-32	1/8" THICK	100
HN14	1/4"-20	7/32" THICK	100
HN516	5/16"-18	17/64" THICK	100
HN38	3/8"-16	21/64" THICK	100
HN12	1/2"-13	7/16" THICK	100
HN58	5/8"-11	35/64" THICK	50
HN34	3/4"-10	41/64" THICK	50



ASTM F844 USS PATTERN FLAT WASHERS

PART NUMBER	BOLT SIZE		QTY
FW6	#6	.375" OD X .036" THICK	100
FW8	#8	.437" OD X .036" THICK	100
FW10	#10	.50" OD X .036" THICK	100
FW14	1/4"	.75" OD X .062" THICK	100
FW516	5/16"	.875" OD X .078" THICK	100
FW38	3/8"	1.00" OD X .078" THICK	100
FW12	1/2"	1.375" OD X .109" THICK	100
FW58	5/8"	1.75" OD X .140" THICK	100
FW34	3/4"	2.00" OD X .156" THICK	50



ANSI B18.21.1 MEDIUM SPLIT LOCK WASHERS

PART NUMBER	BOLT SIZE		QTY
LW6	#6	.031" THICK	100
LW8	#8	.040" THICK	100
LW10	#10	.056" THICK	100
LW14	1/4"	.062" THICK	100
LW516	5/16"	.078" THICK	100
LW38	3/8"	.094" THICK	100
LW12	1/2"	.125" THICK	100
LW58	5/8"	.156" THICK	100
LW34	3/4"	.188" THICK	100

